

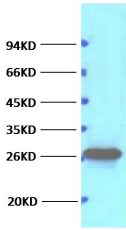
Bcl-2 Ab

Cat.#: BF9103
Size: 100ul,200ul

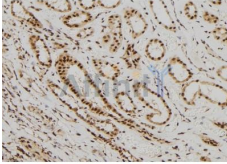
Concn.: 1mg/ml
Source: Mouse

Mol.Wt.: 26 kd
Clonality: Monoclonal

Application:	WB 1:1000 IHC 1:50-1:200
Reactivity:	Human,Mouse,Rat
Purification:	affinity purification.
Specificity:	The Bcl-2 mouse monoclonal Ab can detect endogenous Bcl-2 proteins.
Immunogen:	Mouse monoclonal antibody is prepared by immunizing synthetic peptide coupled to KLH.
Uniprot:	P10415
Description:	BCL2 is an integral outer mitochondrial membrane protein that blocks the apoptotic death of some cells such as lymphocytes. Constitutive expression of BCL2, such as in the case of translocation of BCL2 to Ig heavy chain locus, is thought to be the cause of follicular lymphoma. BCL2 suppresses apoptosis in a variety of cell systems including factor-dependent lymphohematopoietic and neural cells. It regulates cell death by controlling the mitochondrial membrane permeability.
Subcellular Location:	Mitochondrion outer membrane. Nucleus membrane. Endoplasmic reticulum membrane.
Tissue Specificity:	Expressed in a variety of tissues.
Similarity:	BH1 and BH2 domains are required for the interaction with BAX and for anti-apoptotic activity.The BH4 motif is required for anti-apoptotic activity and for interaction with RAF1 and EGLN3.The loop between motifs BH4 and BH3 is required for the interaction with NLRP1.Belongs to the Bcl-2 family.
Storage Condition and Buffer:	Store at -20°C. Stable for one year from the date of shipment.1mg/ml in PBS, pH 7.4, containing 0.02% sodium azide and 50% glycerol.



Western blot analysis of Bcl-2 Ab expression in MCF7 cells lysates.



IHC analysis of Human kidney tissue, using Bcl-2 Ab at 1:100.

IMPORTANT: For western blot, incubate membrane with diluted primary Ab in 5% w/v milk , 1X TBS, 0.1% Tween@20 at 4°C with gentle shaking, overnight.

For Research Use Only. Not for use in diagnostic and therapeutic procedures. Not for resale without express authorization.